

RUE JALLOULI FARES

209.28  
209.39  
209.57  
209.64  
209.84  
R.P. 717

Parking  
Cristallin E.P.

209.57  
209.60  
209.69  
209.84

210.23  
210.35  
P.E

210.78  
210.83  
P.E

211.02  
211.02

211.53  
211.53

211.66  
211.66  
P.E

212.09  
212.09

212.17  
212.17  
P.E

212.82  
212.82  
P.E

213.08  
213.08  
P.E

212.48  
212.48

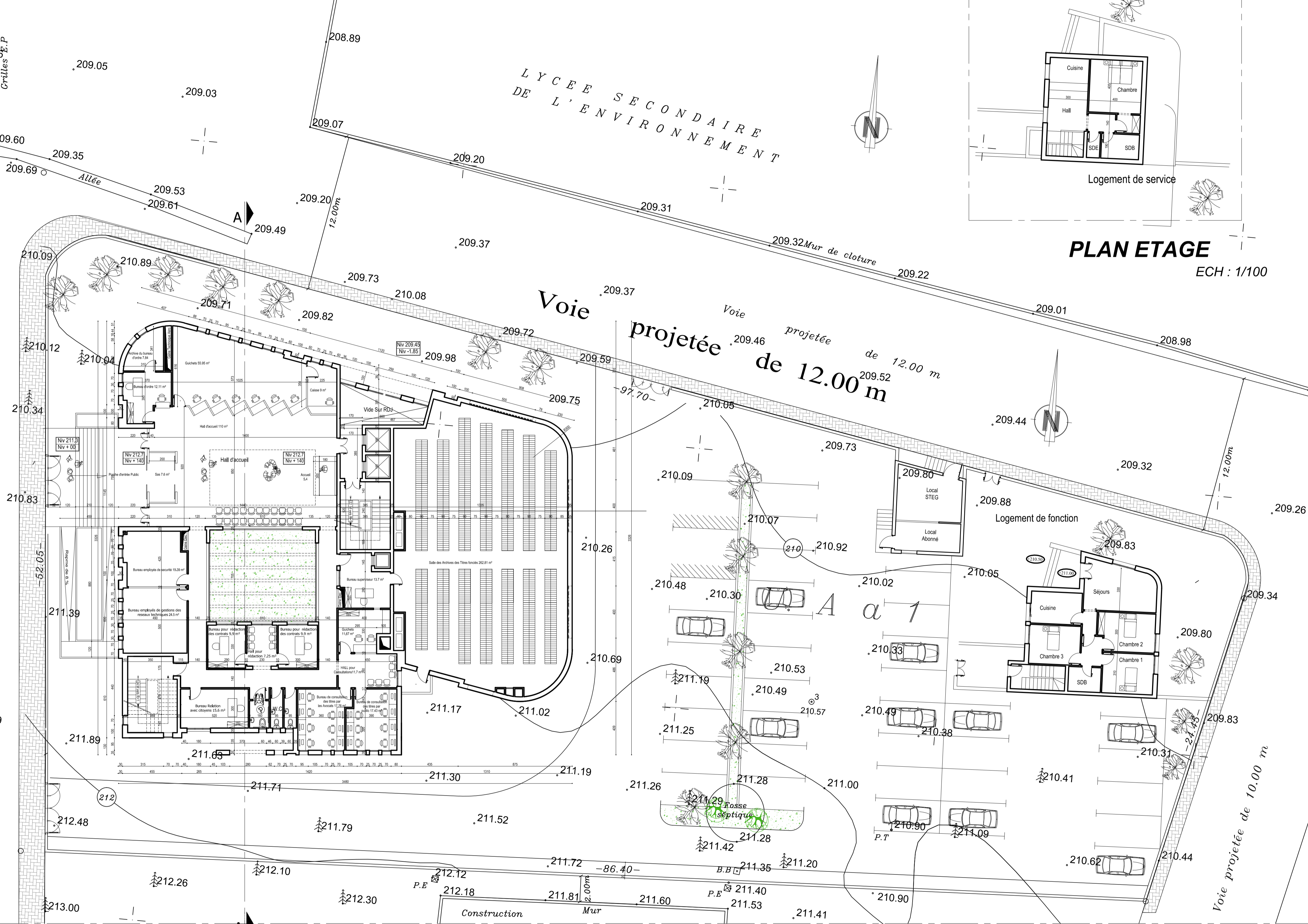
213.00  
213.00

212.26  
212.26

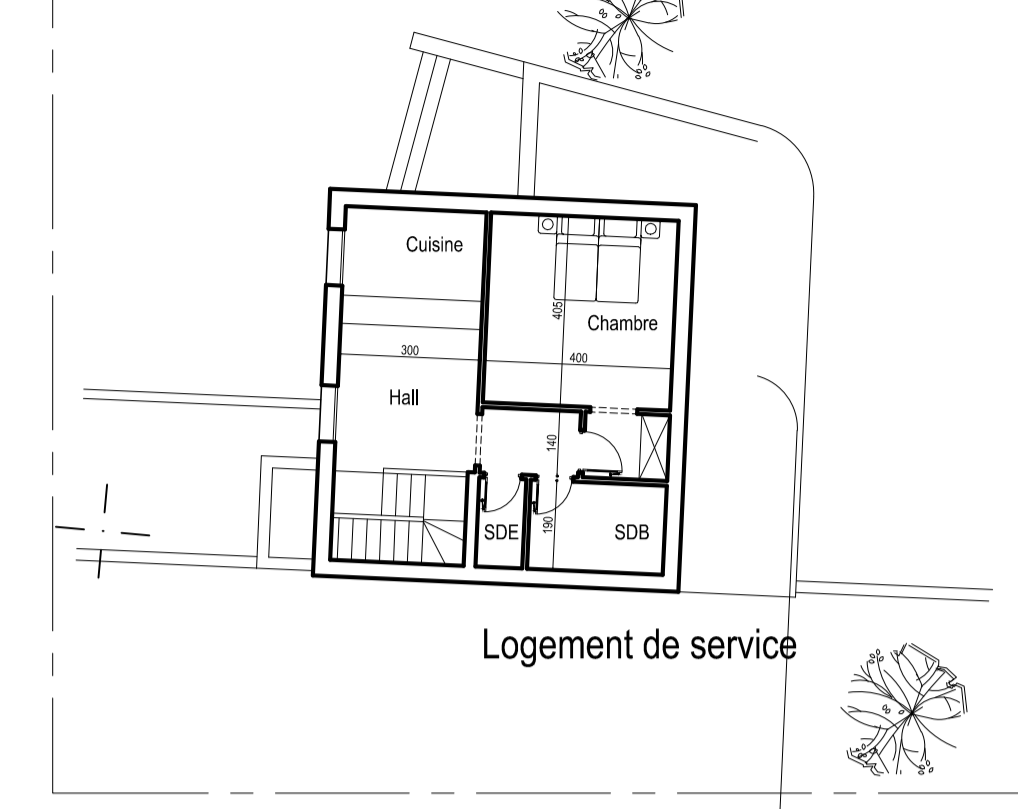
212.30  
212.30

211.79  
211.79

211.52  
211.52



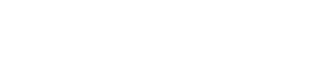
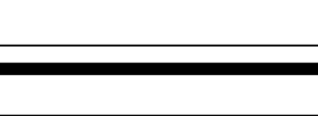
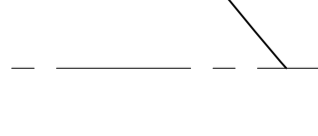
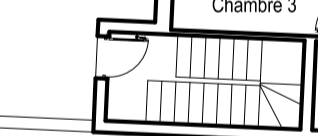
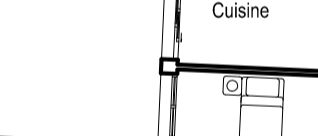
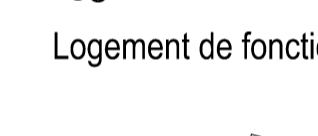
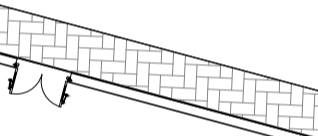
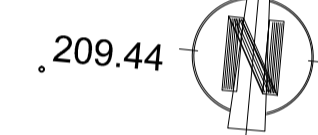
LYCEE SECONDAIRE  
DE L'ENVIRONNEMENT



PLAN ETAGE

ECH : 1/100

Voie projetée de 12.00 m



MINISTÈRE DES DOMAINES DE L'ETAT ET DES AFFAIRES FONCIERES  
 MINISTÈRE DE L'EQUIPEMENT DIRECTION GENERALE DES BATIMENTS CIVILS  
 PROJET DE CONSTRUCTION DU SIEGE DE LA DIRECTION  
 GENERALE DE LA CONSERVATION DE LA PROPRIETE FONCIERE  
 A BEJA VILLE

AVANT PROJET DETAILLER APD  
 Novembre 2012 ECH : 1/100  
 N° 01

NAJIB KRID  
 Architecte D.P.L.G.  
 10, Rue Dr. Alphonse Landon Tadmor - 30111 Algérie - Tél: 71 481 431 - Fax: 71 481 479  
 e-mail: najib@krid.com

Mohamed Ben Ahmed KARRAY  
 Architecte D.P.L.G.  
 10, Rue Dr. Alphonse Landon Tadmor - 30111 Algérie - Tél: 71 481 431 - Fax: 71 481 479  
 e-mail: mohamed@krid.com