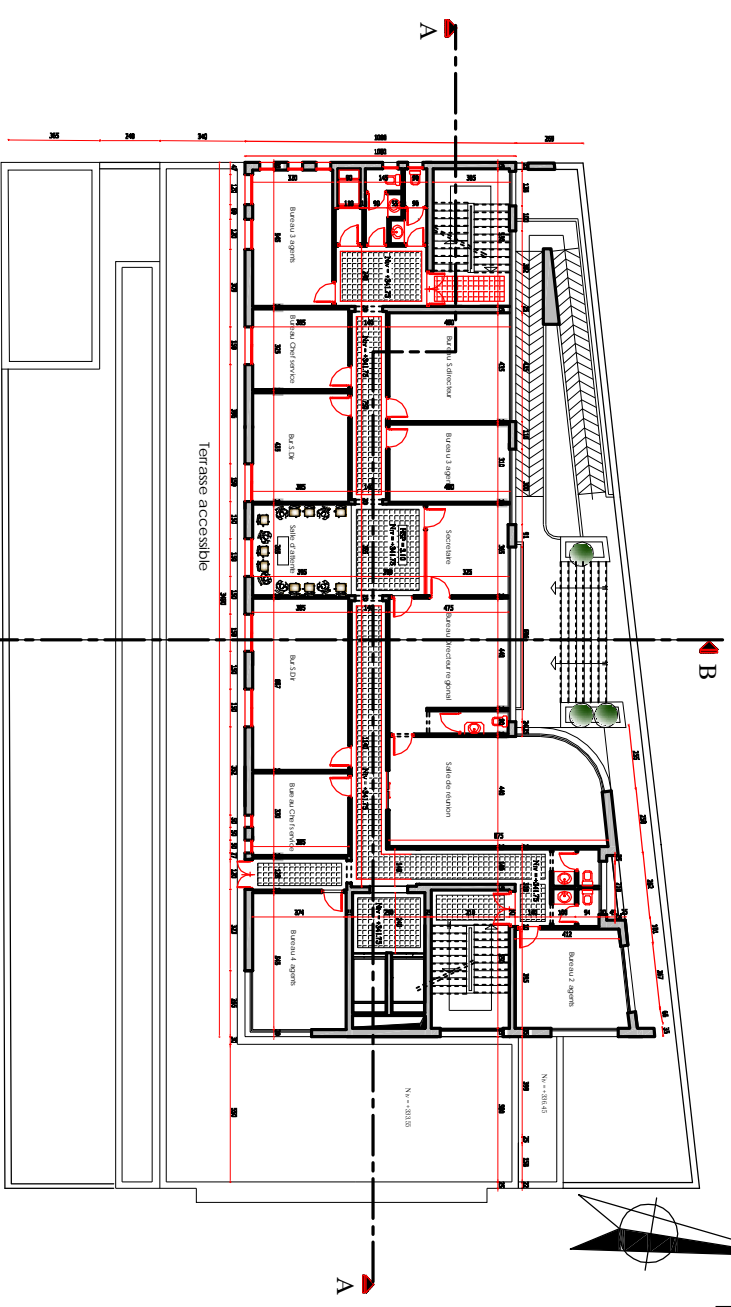
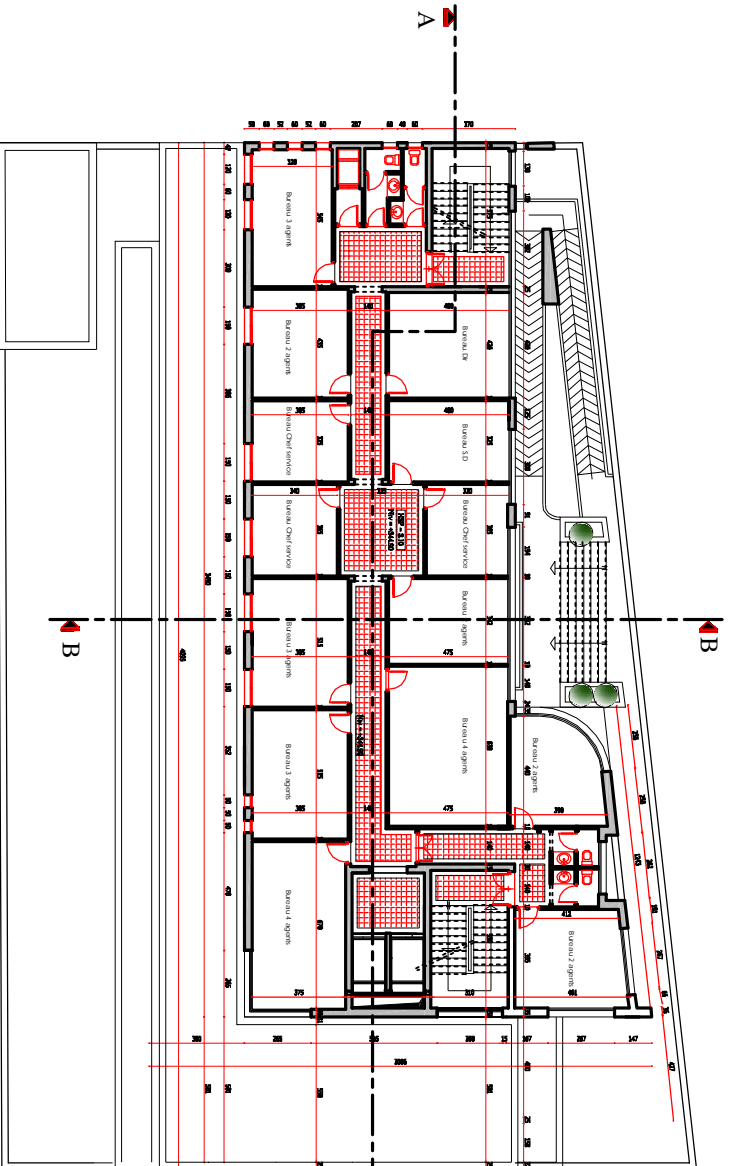


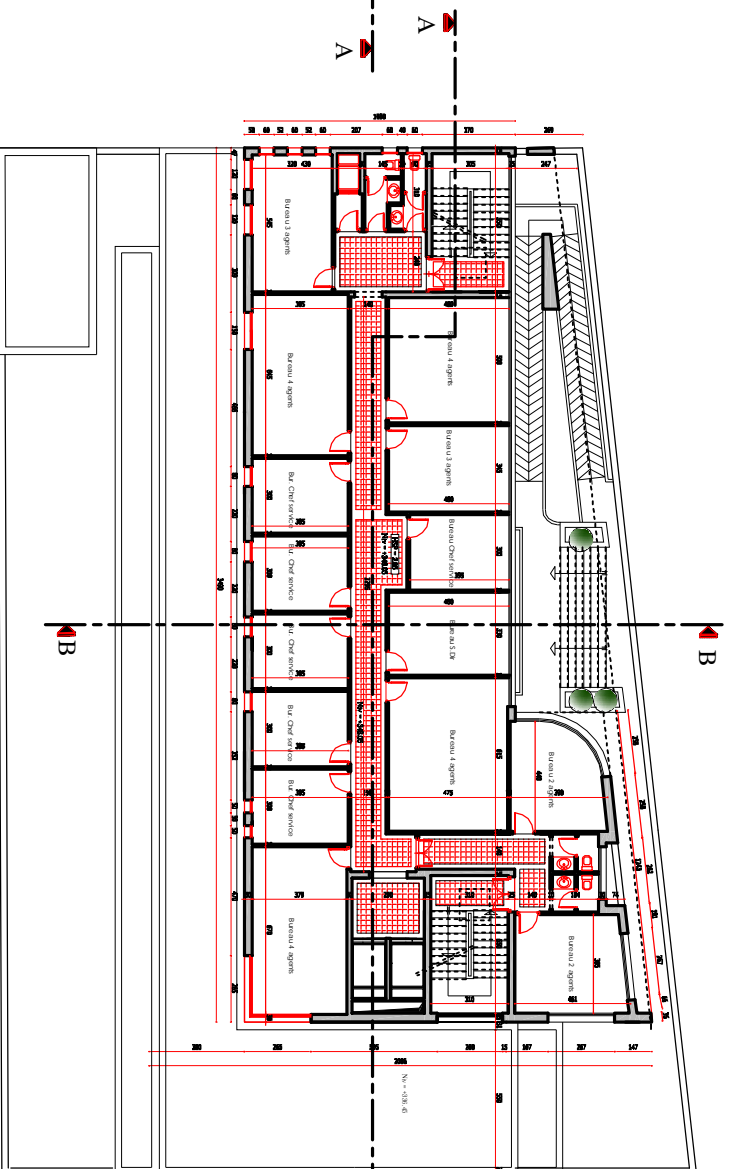
PLAN 2EME ETAGE ECH:1/100



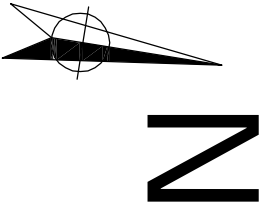
PLAN R+3 ECH:1/100



PLAN R+4 ECH:1/100



PLAN R+5 ECH:1/100



REPUBLIQUE TUNISIENNE
 MINISTERE DES DOMAINES DE L'ETAT ET DES AFFAIRES FONCIERES
 MINISTERE DE L'EQUIPEMENT ET DE L'HABITAT
 DIRECTION GENERALE DES BATIMENTS CIVIS

SIDI BOUZID

PROJET DE CONSTRUCTION DU SIEGE DE LA DIRECTION REGIONALE DE CONSERVATION FONCIERE DE SIDI BOUZID

PLAN R-1 - PLAN R-2 - PLAN R-3 - PLAN R-4

BRIGADE D'ARCHITECTES
 MOHAMED NEREDJ, Architecte Principal
 SALEM HERTI, Architecte Assistant
 MOHAMED BEN TEBELI, Architecte Assistant

DATE: 15/03/2015
 ECH: 1/100

PLANCHE	03
DATE	15/03/2015
SCALE	1/100